



Total Solution Provider in Saw Device

SA243AM1

PHS, IF SAW Filter

Revision 0: December 2004



- Electrical Characteristics
 - Package Dimensions
 - Testing Environment
 - Frequency Characteristics
-

SAWNICS Inc.

460 Cheonheung-ri, Seonggeo-eup, Cheonan-si, Chungcheongnam-do, 330-836 / Korea.
Tel: +82 41 550 9372 / Fax: +82 41 550 9399 / www.sawnics.com

□ Electrical Characteristics

Maximum Ratings

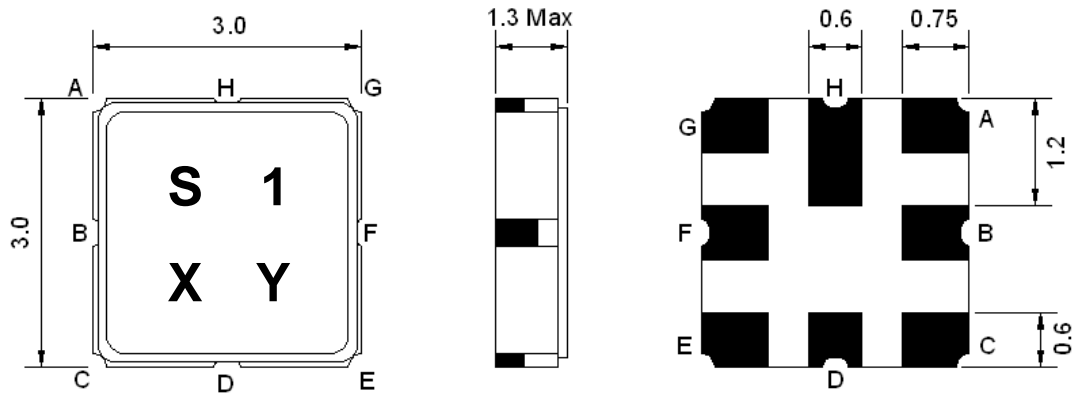
Parameters Description	Unit	Minimum	Typical	Maximum
Operating Temperature Range	°C	-10	-	+60
Storage Temperature Range	°C	-40	-	+85
Maximum DC Voltage	V	-	-	0
Maximum Input Power	dBm	-	-	5
Source Impedance (single ended) ⁽¹⁾	Ω	-	50	-
Load Impedance (single ended) ⁽¹⁾	Ω	-	50	-
Package type & size	M1			
Length x Width	mm ²	-	3.0 x 3.0	-
Height	mm	-	-	1.3

Electrical Specification

Parameters Description	Unit	Minimum	Typical	Maximum
Center Frequency (Fo)	MHz	-	243.95	-
Insertion Loss at Fo	dB	-	3.0	4.0
Amplitude Ripple within Fo±100 KHz	dB	-	0.4	1.0
Group Delay Ripple within Fo±100 KHz	μsec	-	0.4	1.0
Attenuation:				
Fo ± 600 KHz	dB	25	30	-
Fo ± 10.7 MHz	dB	40	60	-
Fo ± 21.4 MHz	dB	60	65	-

Notes : (1) With matching network(Ref. Testing Environment Circuit as shown below)

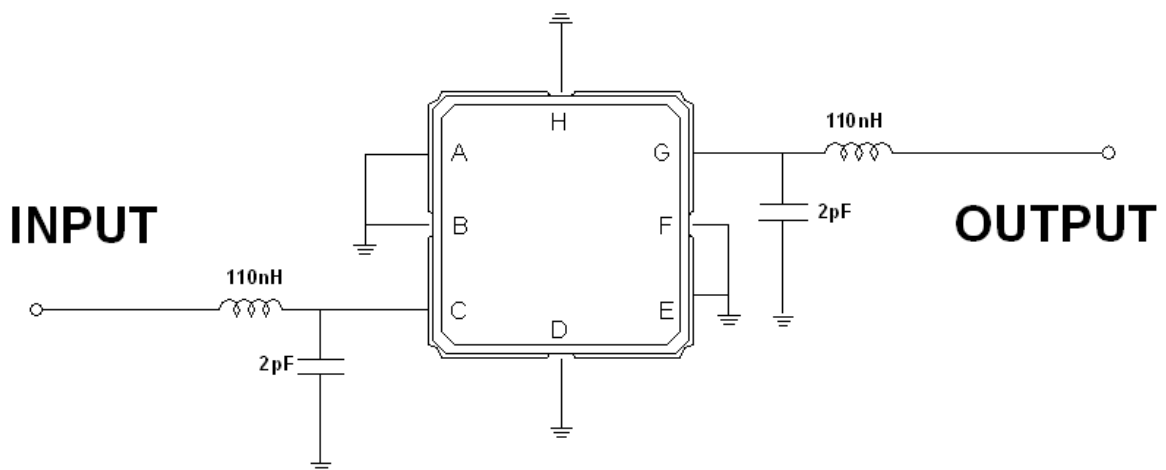
Package Dimensions



Marking Descriptions	
S	PHS Application
1	Series Number
X	Date Code(Year)
Y	Date Code(Month)

Pin Description	
A, B, D, E, F, H	Ground
C	In
G	Out

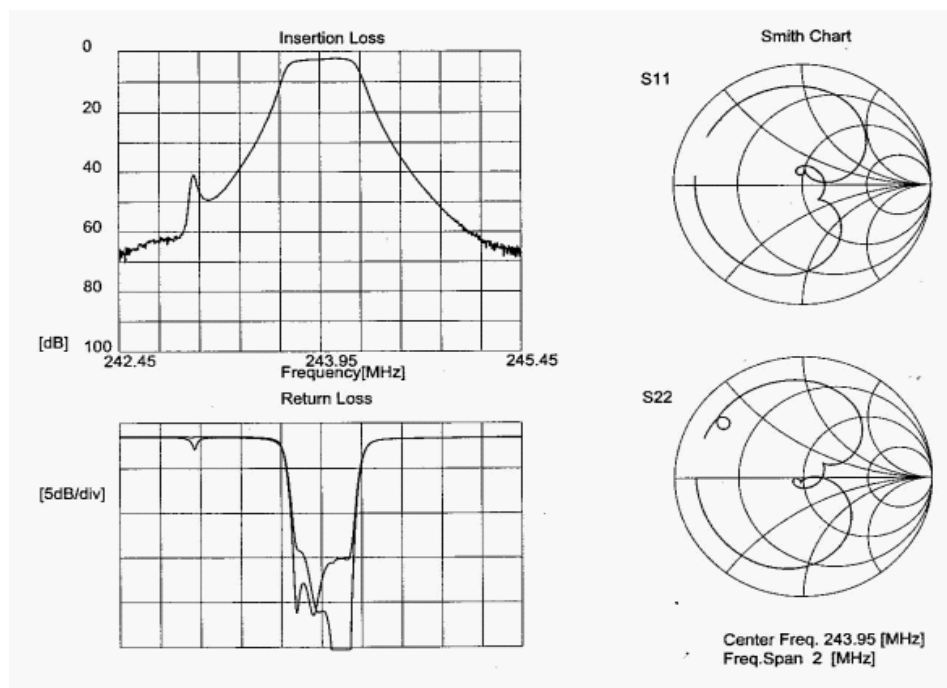
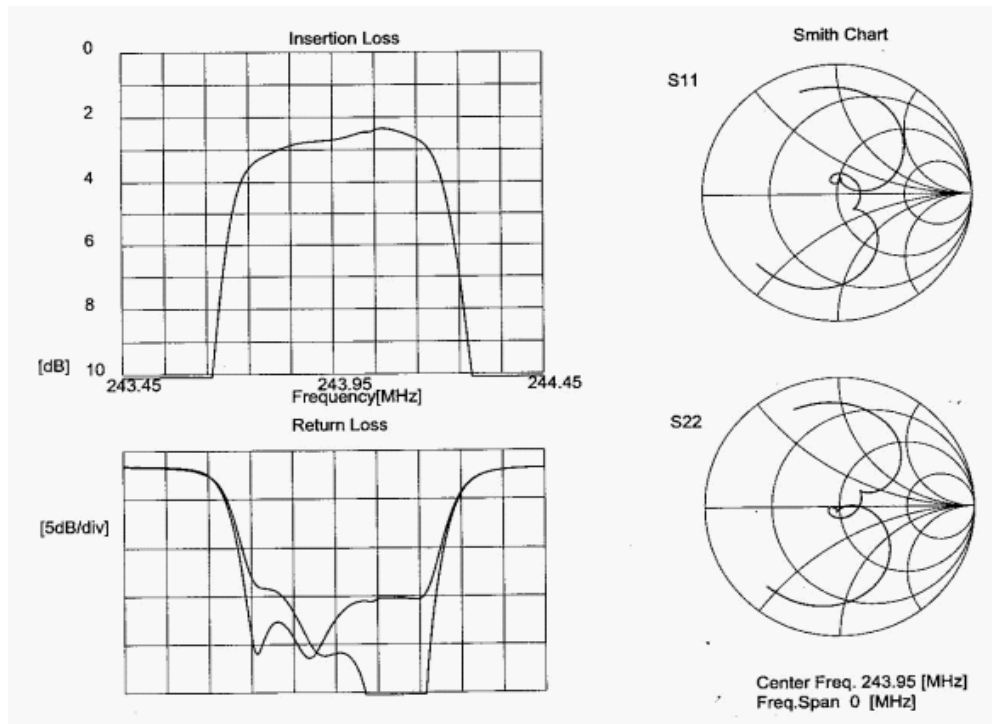
Testing Environment



Source & Load Impedance : 50 Ω

□ Frequency Characteristics

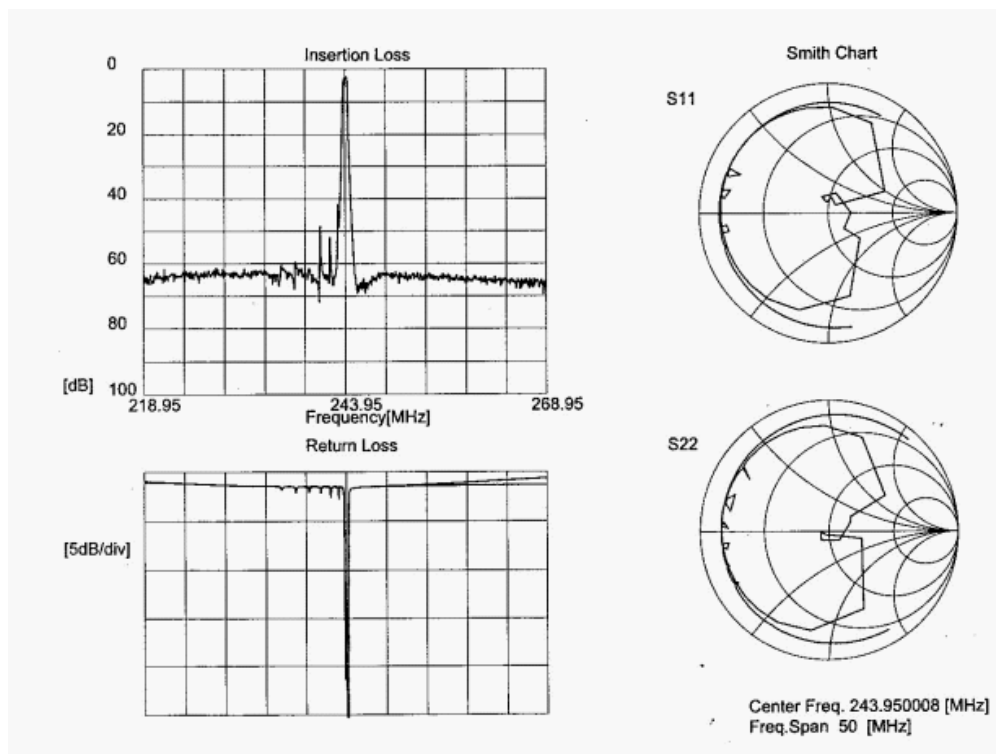
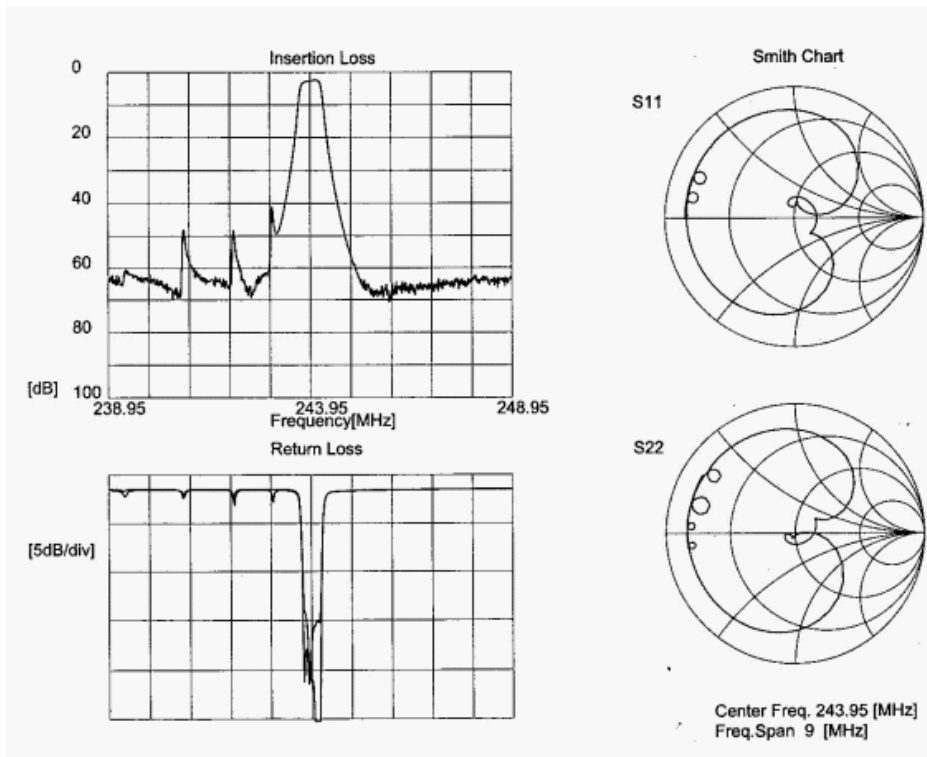
Frequency Response





SA243AM1

PHS, IF SAW Filter



Group Delay

